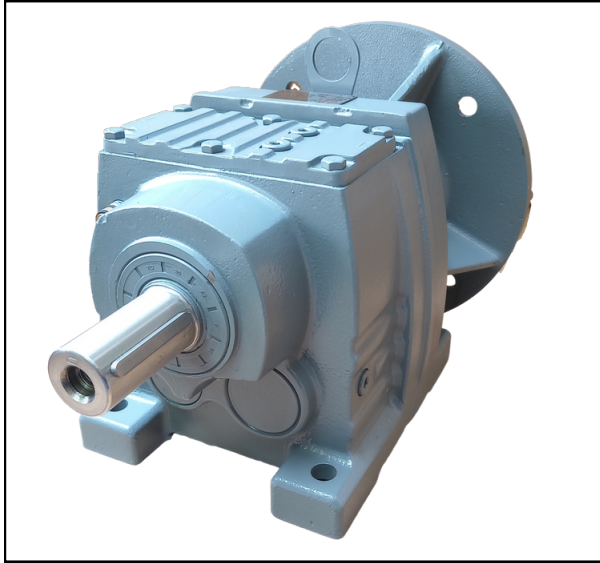


Reductor Colineal

De engranes helicoidales Tamaño 57



mairsa



Modelo	Relación	RPM	Torque máx. lb-in	HP	Factor de Servicio	Brida	Flecha de entrada	Flecha de salida
R57	<u>7</u>	232	1356	5	2.27	180	1-1/8"	1 3/8"
	<u>8</u>	220	1890	5	1.65	180	1-1/8"	1 3/8"
	<u>22</u>	80	3949	5	1	180	1-1/8"	1 3/8"
	<u>30</u>	58	7204	3	2.21	180	1-1/8"	1 3/8"
	<u>43</u>	40	3119	2	1.27	140	7/8"	1 3/8"

Tamaño	a	e	g	h	j	k	m	Dimensiones del eje				Brida				H	L1	L2	N	U1	T1	D1
	b	f					n	d	l1	l2	s	t	p	l5	V							
R57	6.50	7.87	3.94	2.13	0.94	ø 0.53	2.36	ø 1.375*	2.76	2.25	1/2-13*1.12	1.52	6.50	2.62	0.41	7.51	12.74	10.65	0.63	0.188	0.96	0.875
	5.31	7.48					4.37 ⁰ _{-0.02}					0.31	4.50	0.47	5.875							

